

# Earl Cole Music

**Tributes – Solo**  
DJ service also available

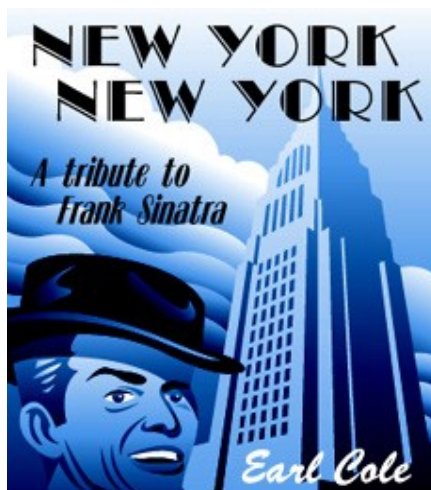


## MICHAEL BUBLE

The undisputed modern day king of croon is Michael Buble. There is nowhere in the world where he is more popular and has enjoyed more chart success than in Australia.

Earl Cole's tribute to Michael Buble covers all his best known songs from his debut 2003 album *Michael Buble* to his latest release *Crazy Love*.

This is the most popular show that Earl performs and he has performed this tribute overseas on many occasions.

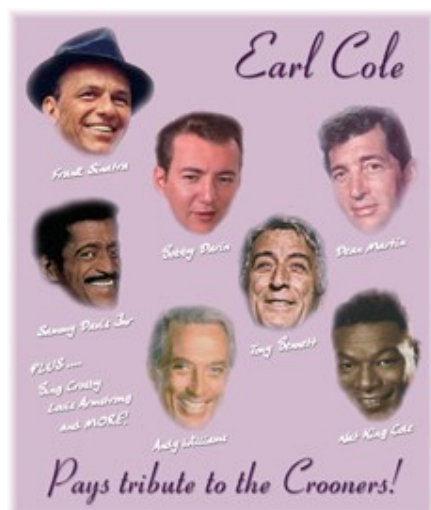


## FRANK SINATRA

Earl's very first performance was *New York, New York*. He is somewhat of a Sinatraphile and is an avid collector of Sinatra recordings and memorabilia.

*New York, New York* is a collection of Sinatra's best known songs spanning 5 decades. Earl has a comprehensive Sinatra repertoire of almost 80 songs.

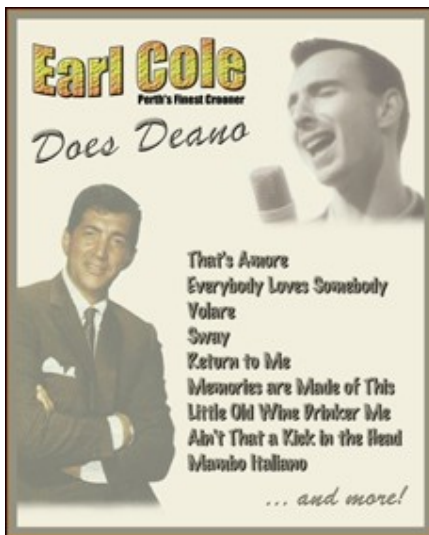
*New York, New York* will appeal to young and old alike - from those wanting to reminisce of days gone by to the new breed of 'lounge' music lover discovering the magic of Sinatra for the first time.



## THE CROONERS

The great crooners of the forties, fifties and sixties are brought to life in Earl Cole's *Tribute to the Crooners*. Nat King Cole, Dean Martin, Tony Bennett, Bobby Darin, Perry Como, Andy Williams, Matt Monro, Sammy Davis Jnr, Louis Armstrong, Bing Crosby, Fred Astaire and of course Sinatra feature in this fabulous presentation.

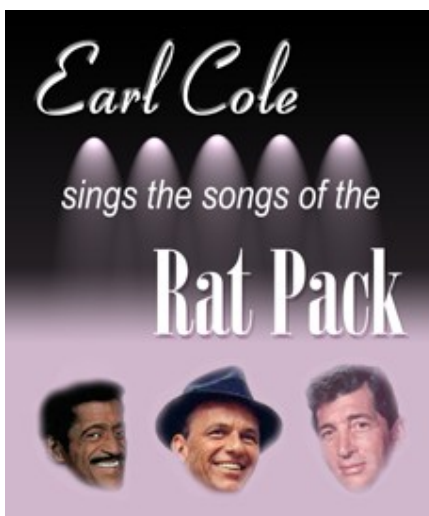
Earl's *Tribute to the Crooners* appeals to a wide audience and suits almost any occasion.



## DEAN MARTIN

Dean Martin remains very popular and his recordings sell almost as strongly now as they did during his heyday.

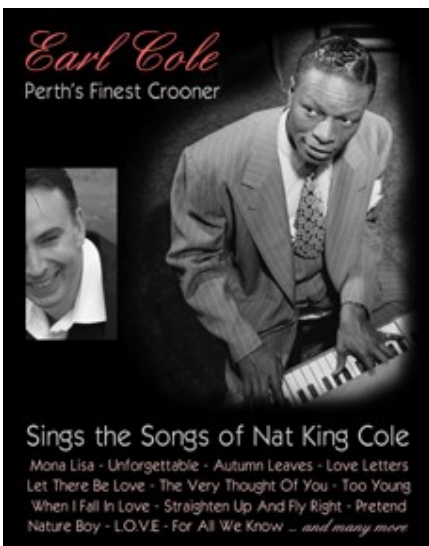
Earl's voice and his tall, dark looks are ideally suited to covering Dean Martin. Earl does Deano (Dino) very, very well.



## THE RAT PACK

In the late fifties and early sixties Frank Sinatra (the 'Chairman of the Board'), Dean Martin and Sammy Davis Jnr were members of the Hollywood 'Rat Pack'. They sang together, hung out together and appeared in movies such as *Oceans Eleven*.

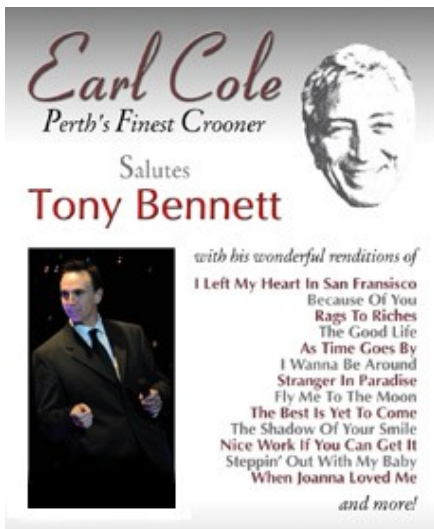
Earl sings some of their best known songs in his tribute to the Rat Pack.



## NAT KING COLE

Nat King Cole is one of the most successful and influential jazz and swing icons of the 20th Century. His life was tragically cut short at the age of 45 but his legacy remains.

Earl has performed his Nat King Cole tribute overseas and covers Nat's music from his trio days right through to the end of his glittering solo career. Earl is a huge Nat King Cole fan. He regards Nat's voice as being almost without peer and loves the sheer romance of his songs. Earl also deeply admires the man and his achievements. Earl covers many Nat King Cole classics including *Unforgettable*, *Mona Lisa*, *Nature Boy*, *Route 66* and *L.O.V.E.*



## TONY BENNETT

Tony Bennett is widely considered to be one of the best interpretative singers of jazz and swing standards. His career has lasted almost 60 years and he remains as popular as ever.

Earl sings some of Tony Bennett's best known songs in this tribute to one of the last great 20th century crooners.



## THE BEST OF THE 80S

In a former life Earl Cole enjoyed success as a pop composer, keyboardist and vocalist. He had number one and number three albums on the Western Australian Independent Charts in the mid 1980s and supported touring acts such as Pseudo Echo and Do Re Me. As a young performer he was hailed in the local media as "Perth's answer to Howard Jones". Earl's tribute to the best of the 80s is a return to his musical roots and a hugely nostalgic experience for him.

Earl can also perform *The Best of the 80s* as a duo.



## A SWINGING CHRISTMAS

Earl sings such Festive classics as *Winter Wonderland*, *White Christmas*, *Have Yourself a Merry Little Christmas*, *Let it Snow Let it Snow Let it Snow* and *Its Beginning to Look a Lot Like Christmas* plus some other swinging tunes to dance the night away.

Earl can also perform *A Swinging Christmas* as a duo with vocalist Chelsea J Gibson.

## Tributes – Duo

### DJ service also available

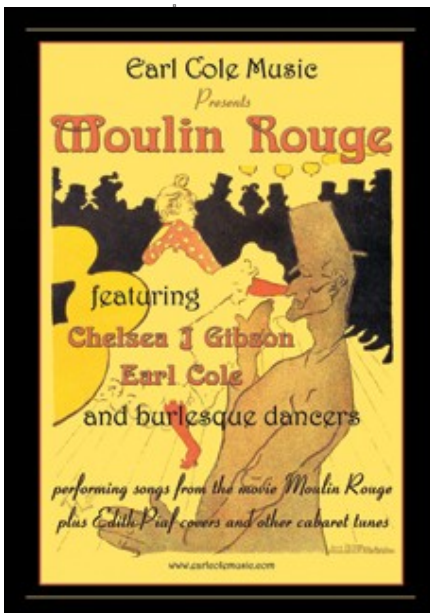
#### MICHAEL BUBLE & NORAH JONES



Earl and Australian Idol semi-finalist Chelsea J Gibson perform the hits of these leading contemporary artists. Other artists such as Eva Cassidy are also covered in this tribute and they sing many duets together.

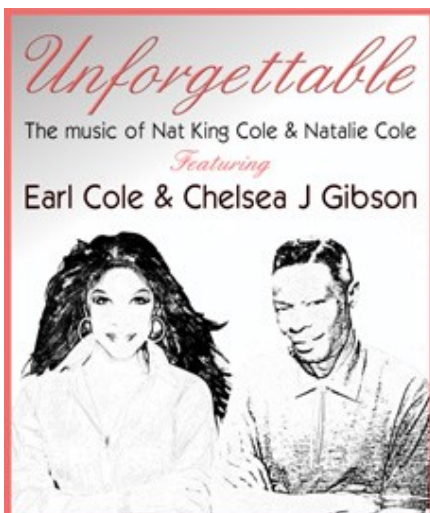
Chelsea is one of Perth's best known and most versatile female vocalists. has an amazing ability to sound just like Norah Jones. Her keyboard playing is equally impressive. Together their voices gell wonderfully well. They have performed this tribute together overseas.

#### MOULIN ROUGE



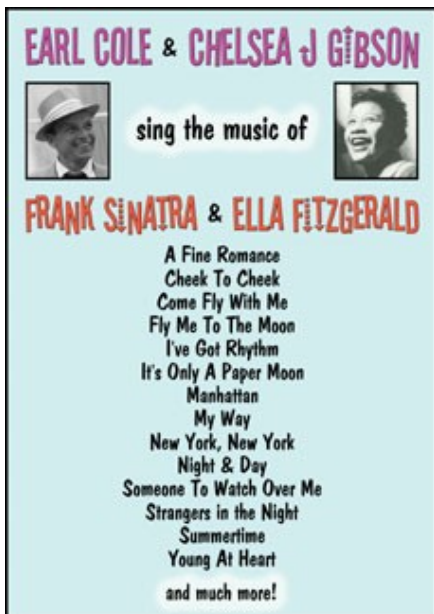
Earl Cole & Chelsea J Gibson perform music from the blockbuster Australian movie *Moulin Rouge* together with songs made famous by Edith Piaf and a selection of other well known cabaret tunes. Burlesque dancers with fabulous costumes add to the visual of this spectacular floor show.

#### NAT KING COLE & NATALIE COLE



Earl & Chelsea J Gibson present the very best of the wonderful Nat King Cole and his daughter Natalie Cole. Natalie never performed with her father who passed away when she was only a child. She has enjoyed a stellar recording career winning 8 Grammys.

Complementing the silky tones of Earl, the extremely versatile Chelsea will cover Natalie's early R & B career as well as her more recent jazz and pop recordings. They also perform a number of duets together including the classic *Unforgettable*.



## FRANK SINATRA & ELLA FITZGERALD

Ella Fitzgerald is known as “the first lady of jazz” who brought the Great American Songbook to life with her wonderful renditions of jazz standards. She had an amazing three octave vocal range and was known for her pure tone and impeccable diction phrasing and intonation.

A true legend, Frank Sinatra was arguably the greatest entertainer of the 20<sup>th</sup> century and very few have ever matched his chart success and record sales.

Fitzgerald and Sinatra left an indelible mark on popular music and Earl and Chelsea's homage to these greats is a celebration of the music of two remarkable performers.



## DISCO INFERNO

During a successful Malaysian tour in November 2008, Earl Cole together with Perth vocalist Chelsea Gibson performed a Michael Buble and Norah Jones tribute at a major awards night. At the end of the awards presentation they did a dance set stacked with 70s disco tunes - for a bit of fun. The response was fantastic. Upon returning to Perth, Earl promptly started putting together a 70s disco show featuring Chelsea and the added visual of the Earl Cole dancers.

With great songs, explosive dance routines & 70s costumes, *Disco Inferno* is a floor show tailor made for corporate clients or functions and events with a 70s theme. It is a very different offering from Earl and shows his versatility as a vocalist and performer.